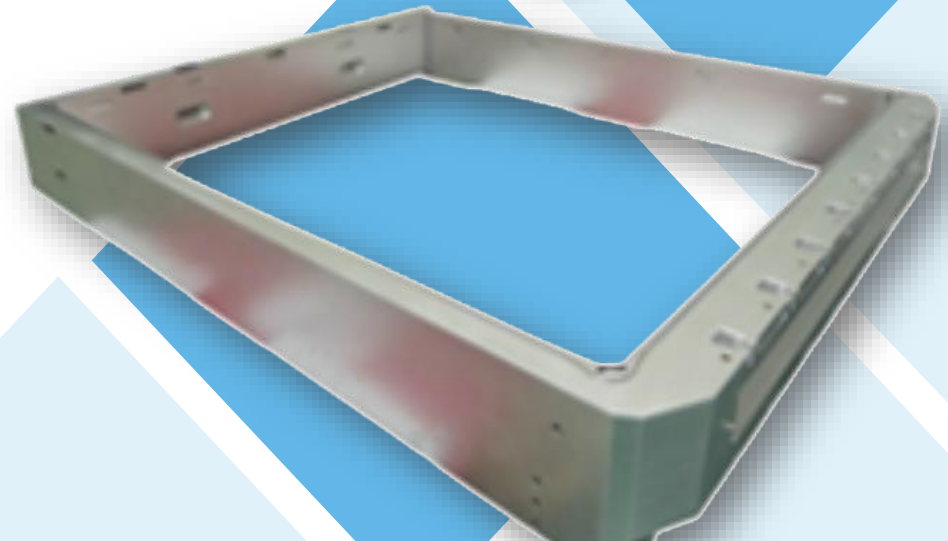
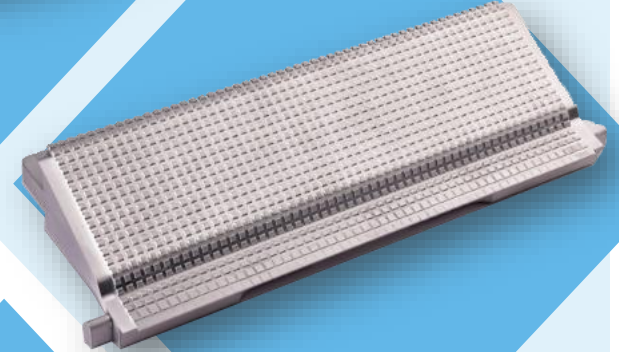




GONGIN PRECISION IND CO., LTD.
PRESENTATION

Hung-Ying Su
2023/12/01



Disclaimer



This presentation may contain predictions, estimates or other information that might be considered forward-looking which are subject to significant risks and uncertainties.

Actual results may differ and will be disclosed via the “Market Observation Post System” at the following link: (<https://mops.twse.com.tw/mops/web/index>).

All copyrights reserved by GONGIN PRECISION, and contents of this presentation may not be reproduced, copied, or used in other way without permission.

Basic Profile



General Information



- Founded: 1978/3/27
- Capital: NT\$450.5 M
- Employees: 780
- Main Plant: Kaohsiung

Operating Projects

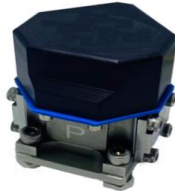
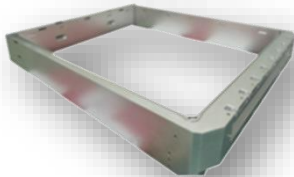


- Semiconductor Parts
- Display Parts
- Aerospace Components

Company Development



Originally a precision tooling designer/manufacturer, we have been working for many years on precision machining technology and special processes for the **aerospace, semiconductor, panel and energy** industries, and have been certified by major global manufacturers.



1978

Precision Mould Design/Manufacturing

1996

OEM Precision Components

2018

OBM Products

Main Product Applications



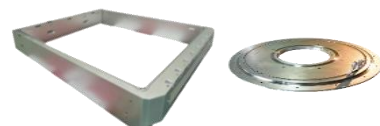
SEMI

- Wafer Fabrication Equipment
- Photolithography Parts
- E-Beam Inspection Parts
- IC Packaging Mould / Tooling



Display

- Panel Manufacturing Equipment
- CVD Vacuum Chamber
- CVD / PVD Parts



Aerospace

- Airplane
- Actuator Parts
- Servo Valve Parts

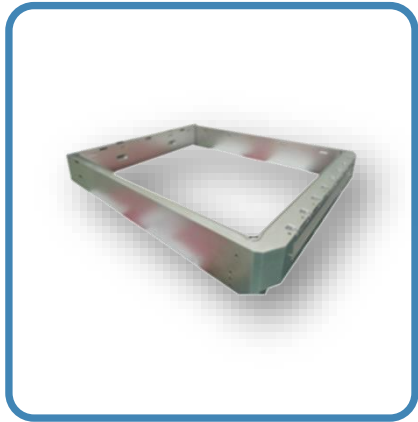


Others

- Energy Equipment Parts
- Thermal Power Plant Parts
- Micro Turbine Parts
- Optical Parts



Core Competency



Total Solution

Provide **one stop shopping** service included machining, welding, heat treatment, surface treatment, assembly and testing.



Quality System

Quality system is based on **aerospace standard** and accredited to AS 9100, ISO 9001, Nadcap, ISO 14001 and ISO 45001.



ERP System

Integrates customer demand, product development, capacity planning, automatic scheduling, MRP, manufacturing, stock control to delivery and customer feedback.



System Integration

Class 1000 clean room assembly with multi functional test capability.



Strong Machining Capability

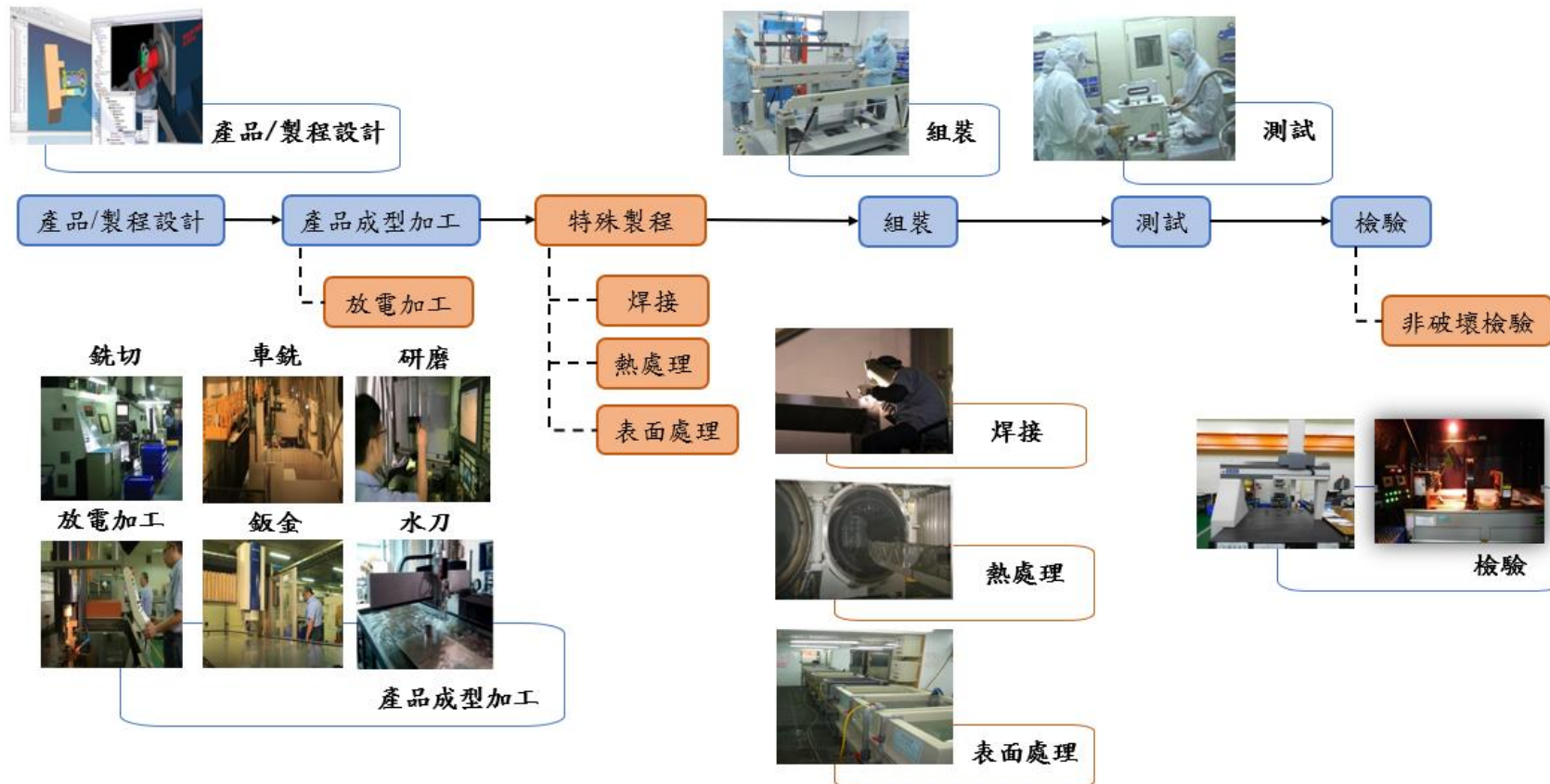
Capable of **um precision machining** with milling, turning, grinding, EDM, and sheet metal capabilities, etc..



One Stop Solution



Complete machining technology, equipment, with a variety of special manufacturing processes. When metal materials purchased into the company, it can be consistent in the factory to complete all the manufacturing process delivery to customers, to provide customers with a wide range of product choices and high quality, short delivery time service.



Quality Certification



The quality system and process equipment used in the production line have been certified by leading aerospace and industrial companies, enabling us to quickly meet the product requirements of each industry.



Quality System

AS 9100
ISO 9001



EHS System

ISO 14001
ISO 45001



Nadcap

Chemical Processing, NDT
Non-Conventional Processing, HT

ERP System



■ Self-developed ERP system provides high mix low volume production.



01 Developing

- Self-designed system
- RVS



02 Engineering

- MRS
- Materials Controlling



03 Manufacturing

- Auto Production Control
- Reducing Human Negligence



04 Quality

- Production Monitoring
- Delivery Delays Preventing



05 Finance

- FMS
- Report Analysis
- Cost Analyses



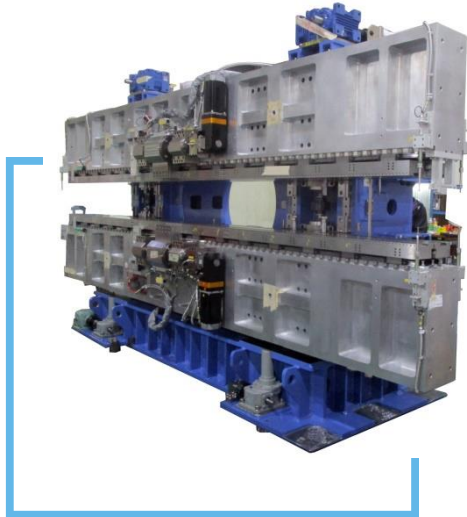
Quality

Cost

Improve



System Integration/Assembly



EPU

Device used in the synchrotron light source facility, it deflects the electrons to produce a high energy light source for substance component research.



Micro Turbine

Use of gas or fuel oil to generate power for generating systems or power sources.



Water Jet Cutting

High pressure water generated by booster for hard-to-cut materials and stress-free machining.



Precision Assembly

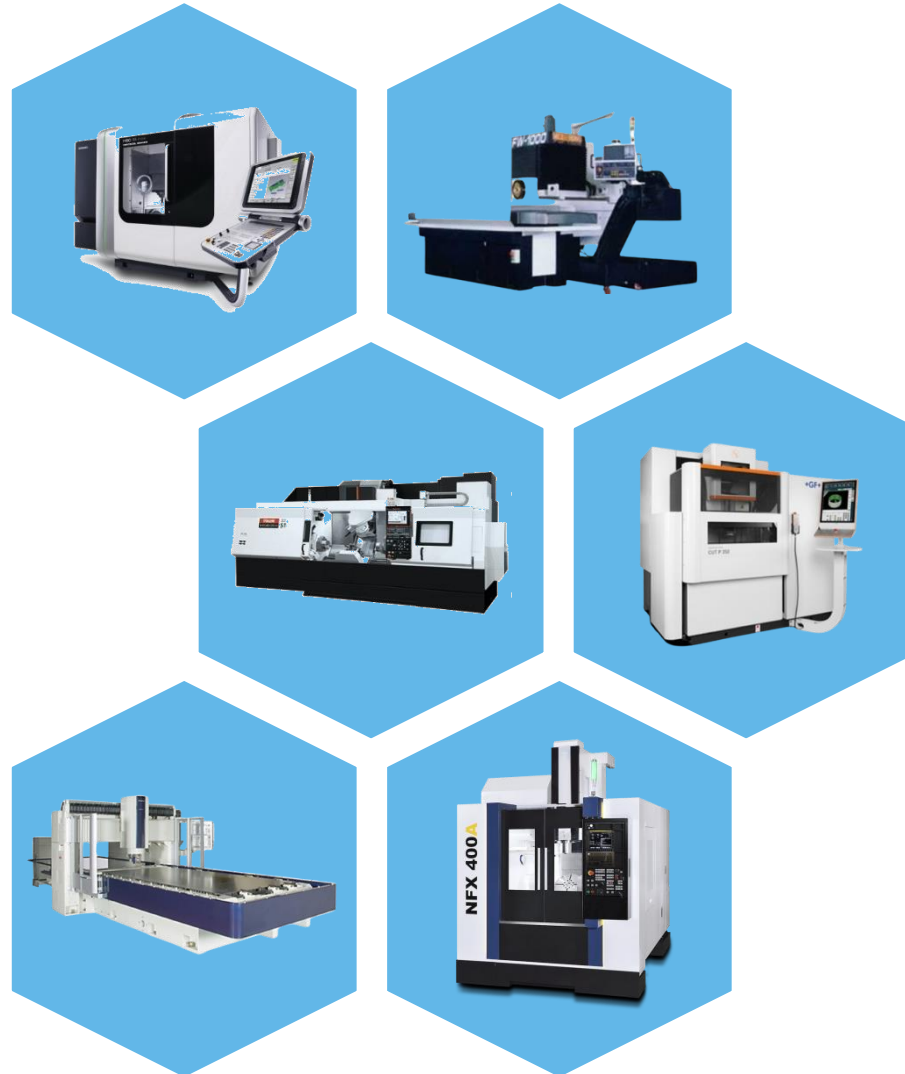
Semiconductor grade clean room mechanism and electromechanical assembly.

Machining Capability



Servo Valve

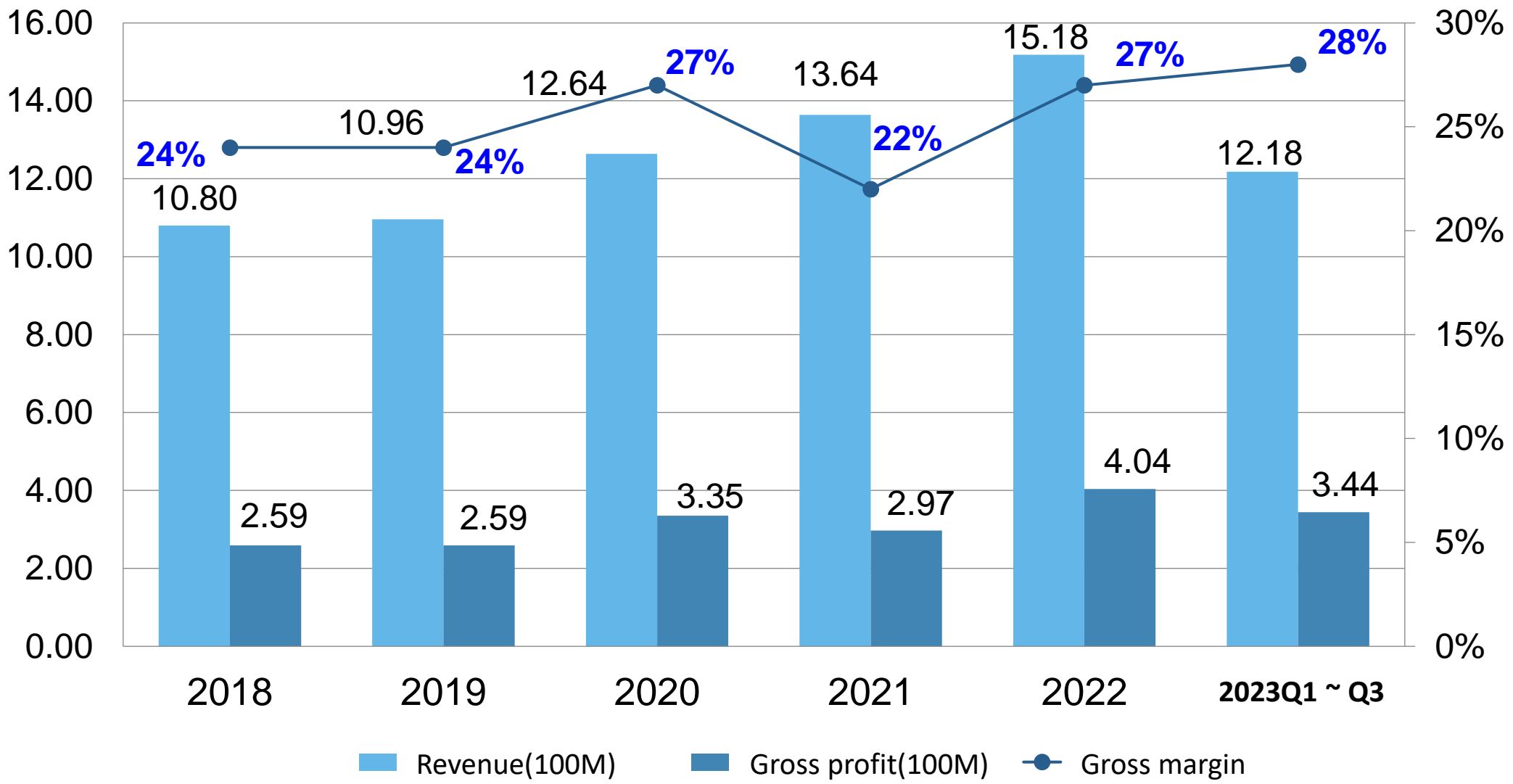
2 μ m Accuracy to achieve the effect of rapid mechanical response.



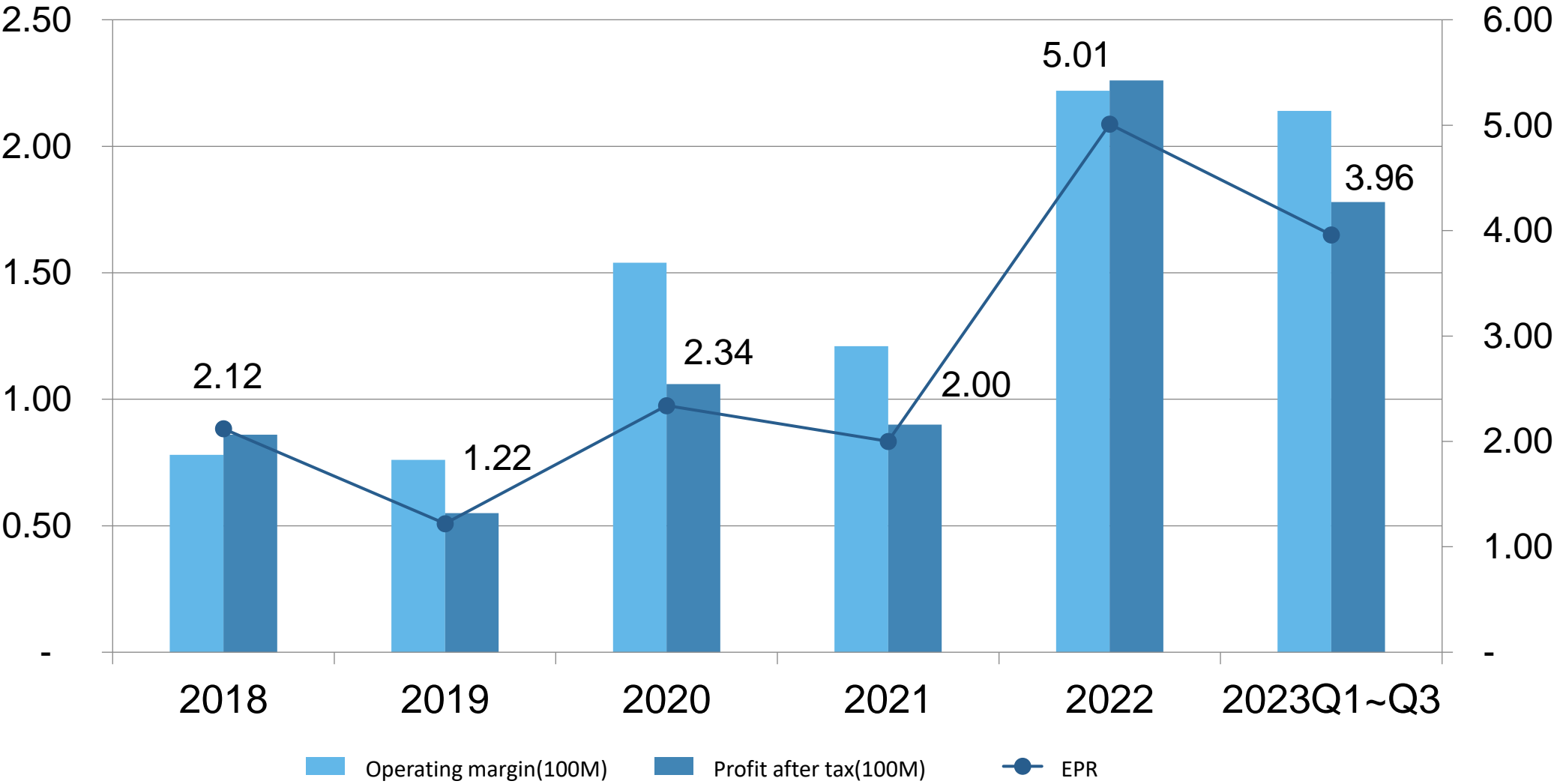
CVD Vacuum Chamber

Highly process-integrated products, including welding, double column milling, chemical cleaning and vacuum leak detection.

Revenue/Gross Profit and Gross Margin



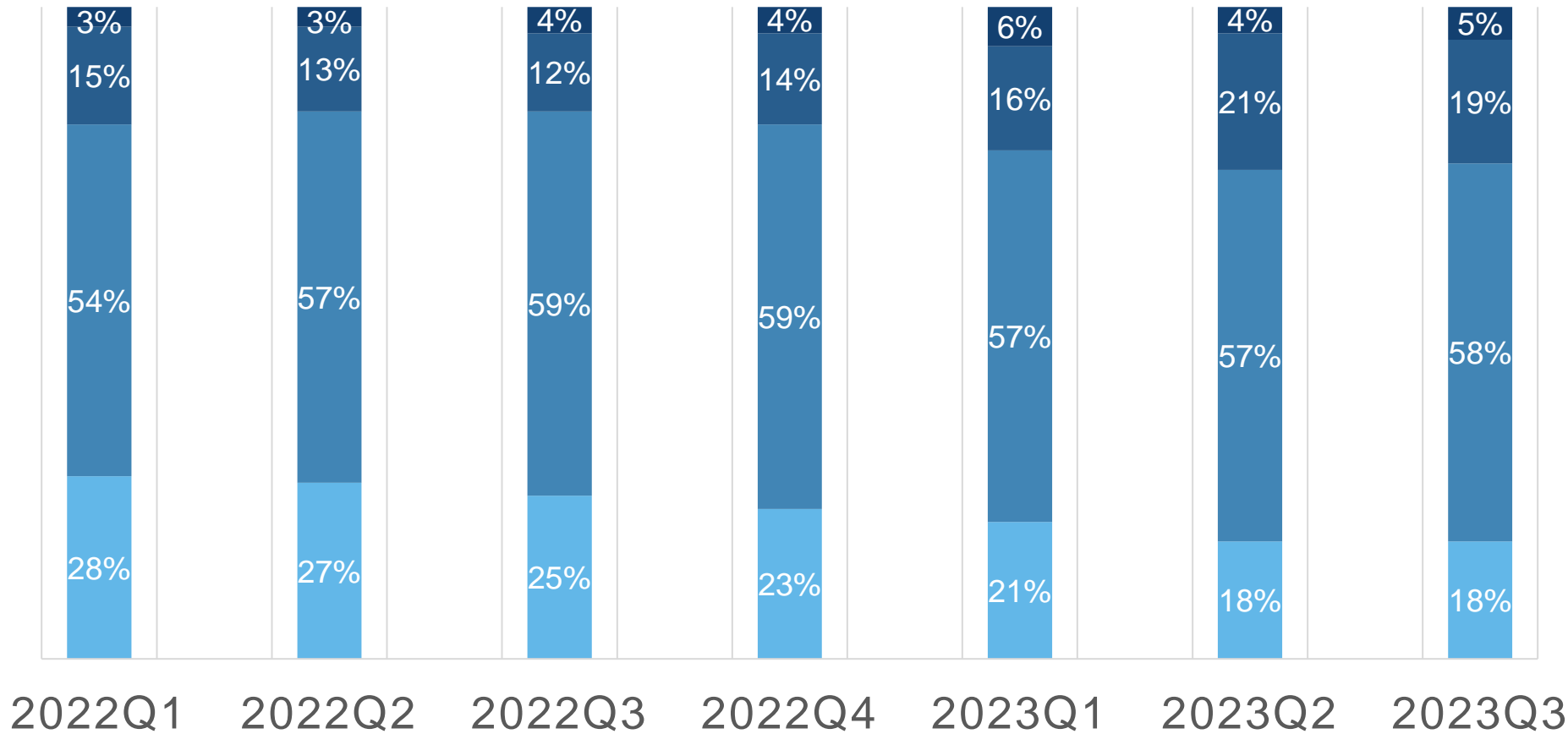
Operating Margin/Profit After Tax & EPS



Revenue Distributions (Accumulated)



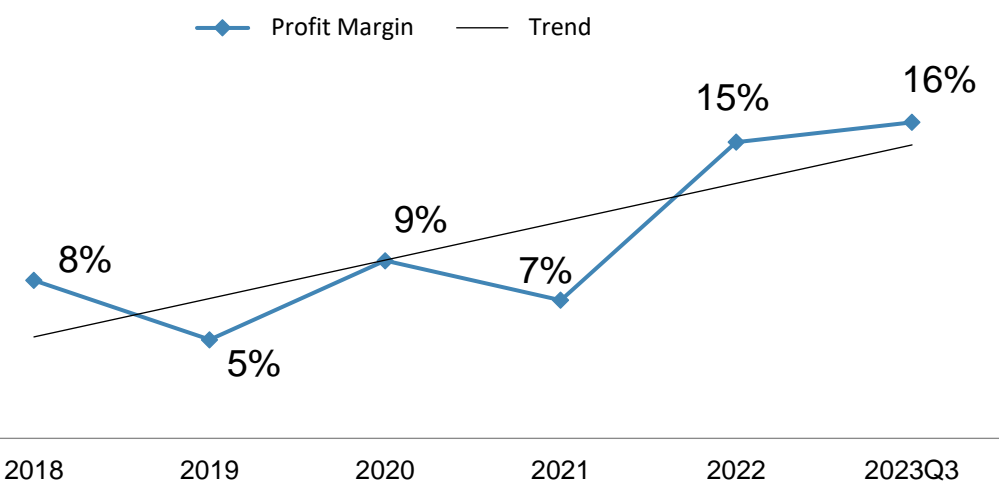
■ Display Equipment ■ Semiconductor ■ Aerospace ■ Others



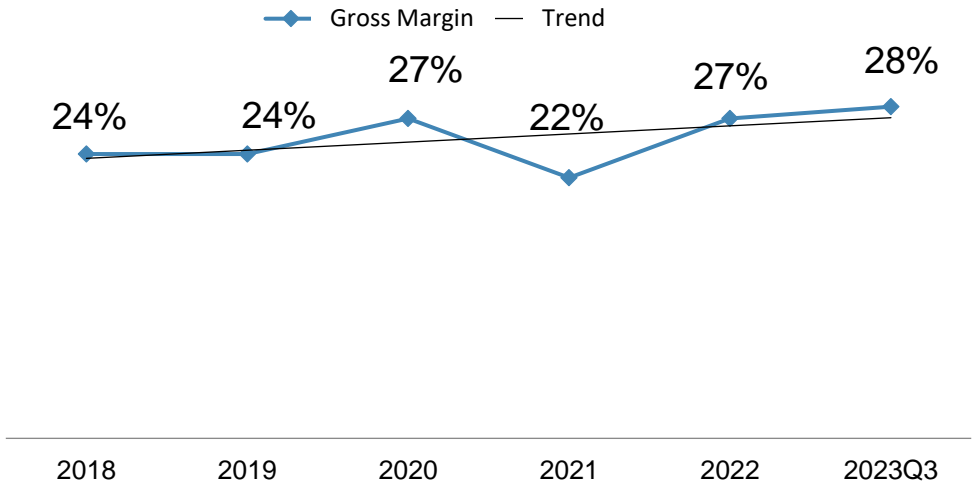
Cumulative Financial Performance Trends



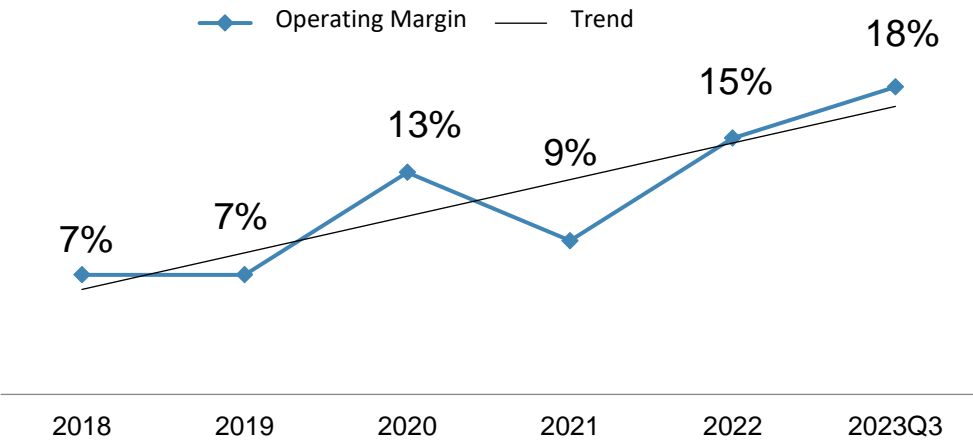
Profit Margin



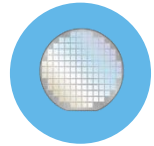
Gross Margin



Operating Margin



Continuing Development -OEM



Semiconductor

IC Packaging
Mould

CVD Parts

Lithography

Lithography
Inspection

E-Beam
Inspection

Optical
Parts



Display Equipment

LCD Parts

LCD
Chamber

OLED Parts



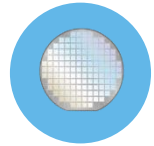
Aerospace

Actuator

Servo Valve



Continuing Development -OBM



Semiconductor

IC Packaging
Mould



Aerospace

Actuator

Servo Valve



Energy

Micro
Turbine



1978

2000

2010

2020

2023~

Future Development Plans



Extension of Core Competence to New Customers and New Product Applications

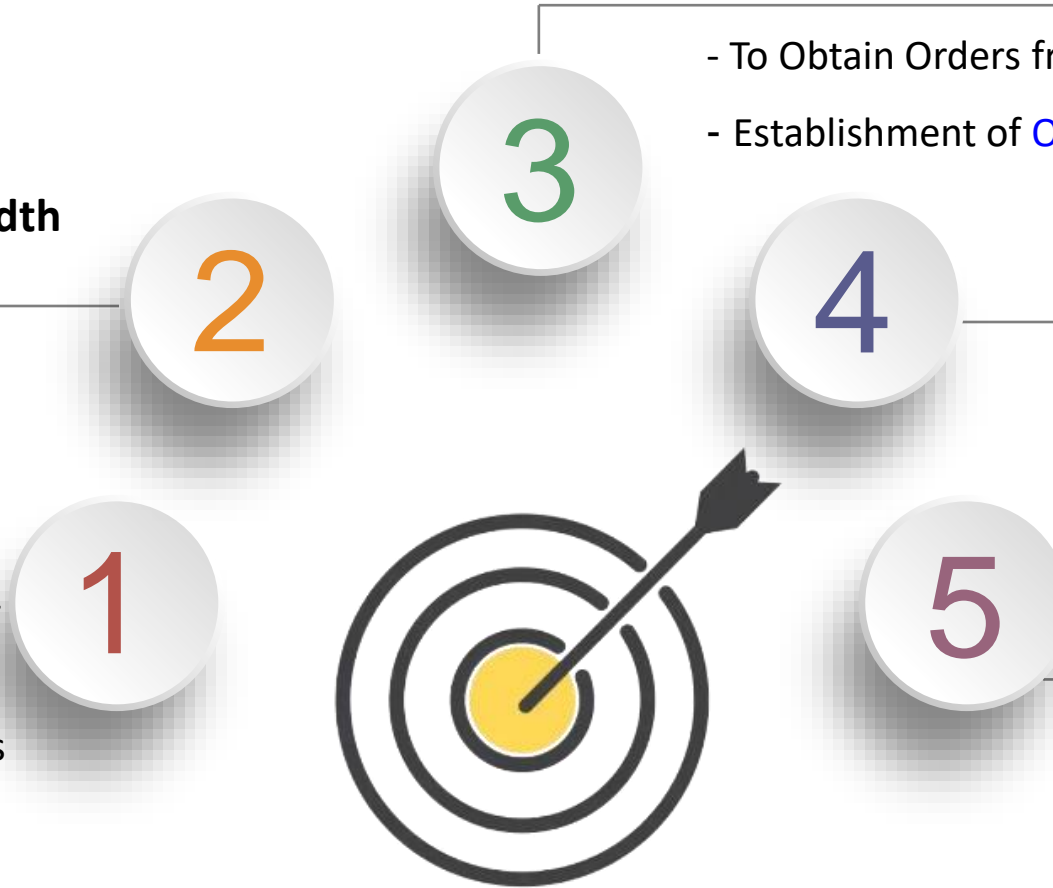
- To Obtain Orders from Benchmarking Customers
- Establishment of **Own Products**

Expanding the Depth and Breadth of Existing Customers

- Consolidate Regular Customers
- New Products Developing

Deepening Core Competencies

- Expanding System Integration
- Sub-Micron Machining Applications
- Deepen Special Process Capability



Surface Treatment Factory

- New Factory
- Adding **Precision Cleaning Lines**

Lu-Jhu Factory

- Located in Lu-Jhu Science Park
- Expanded capacity in response to the growth of the semiconductor and aerospace industries.

MISSION



Thank You

<http://www.gongin.com.tw>